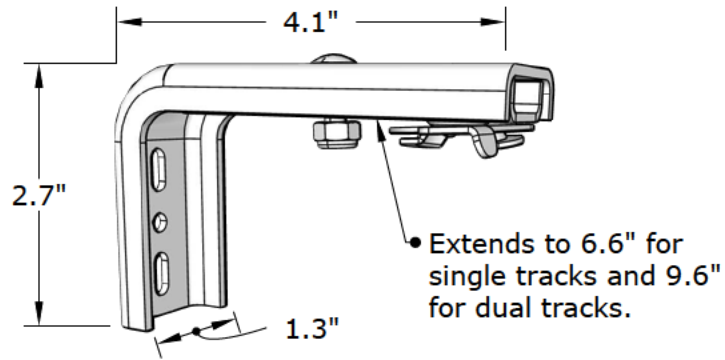
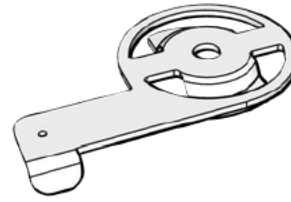


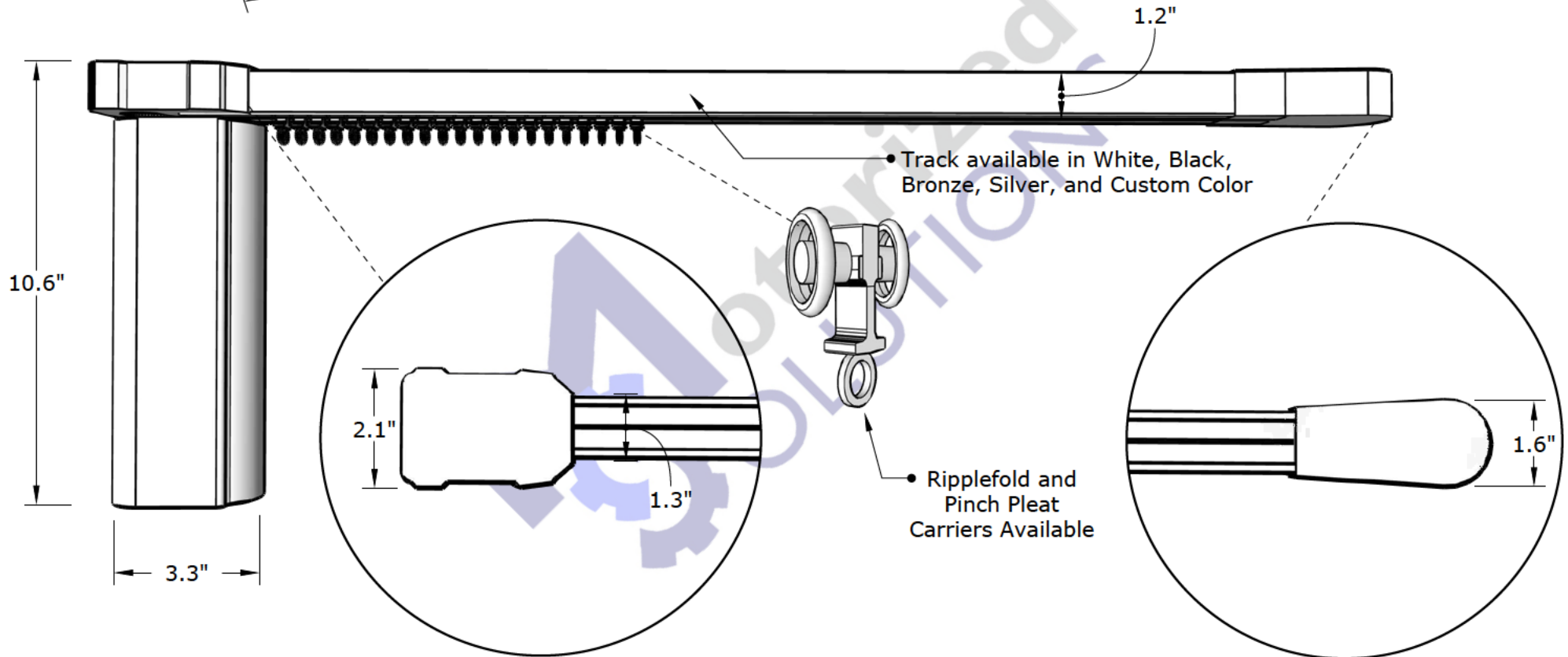
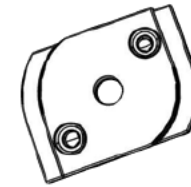
Wall Bracket



Ceiling Bracket



Recess Bracket



Drapery Track System

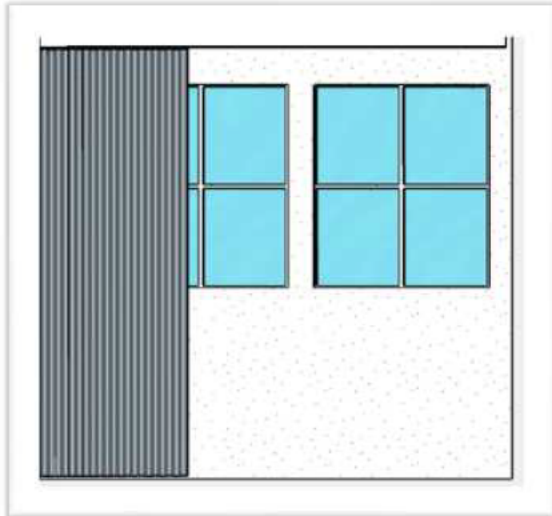


REVISIONS

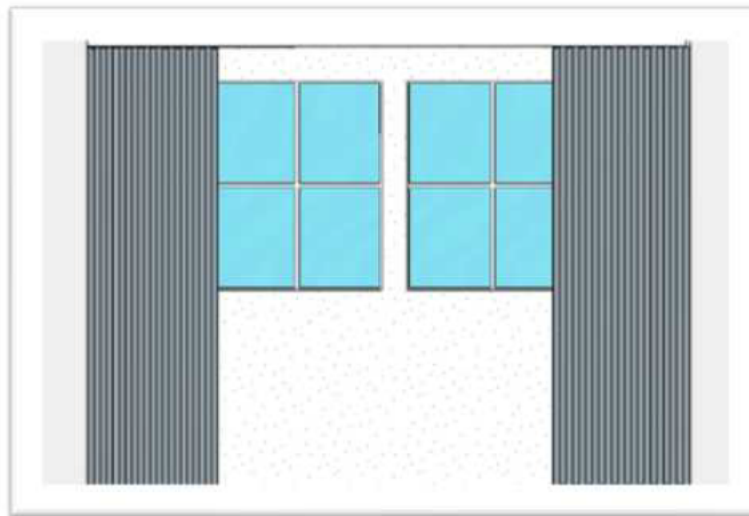
	MM/DD/YY	REMARKS
1	---/---/---	...
2	---/---/---	...
3	---/---/---	...
4	---/---/---	...
5	---/---/---	...

Stack and Draw Positions

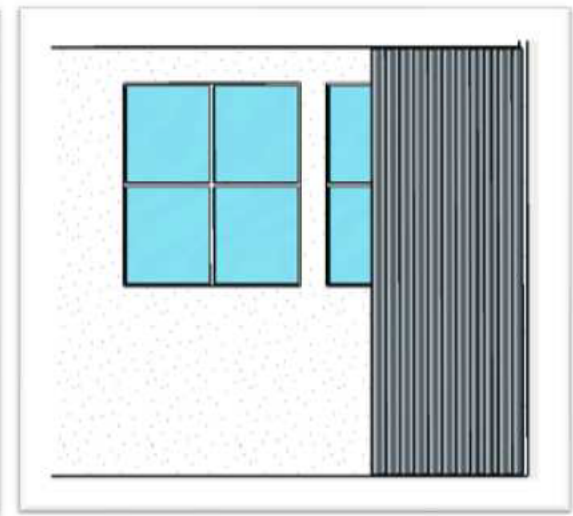
One Way Stack Left



Split Draw

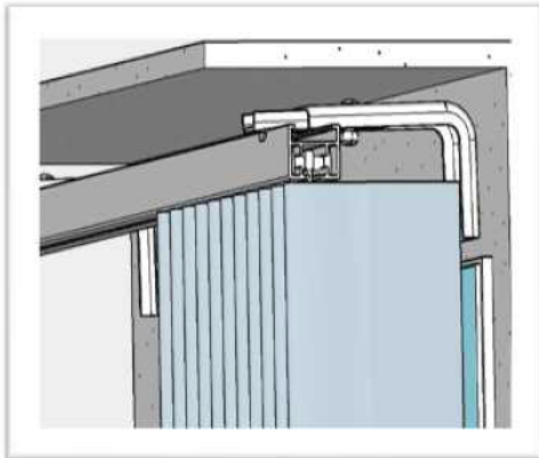


One Way Stack Right

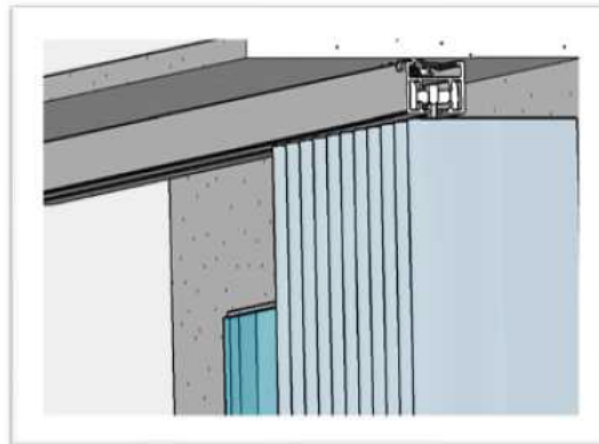


Mount Types

Wall Mount



Ceiling Mount



Recess Mount



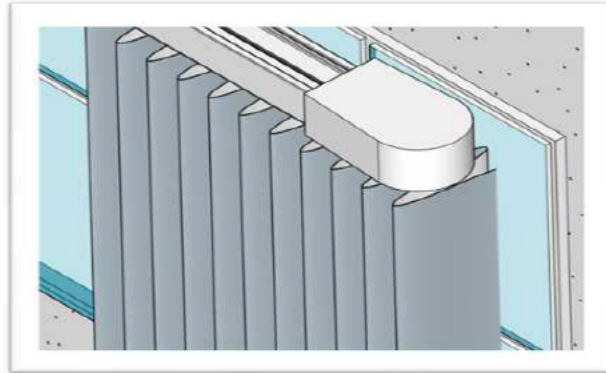
Drapery Track System



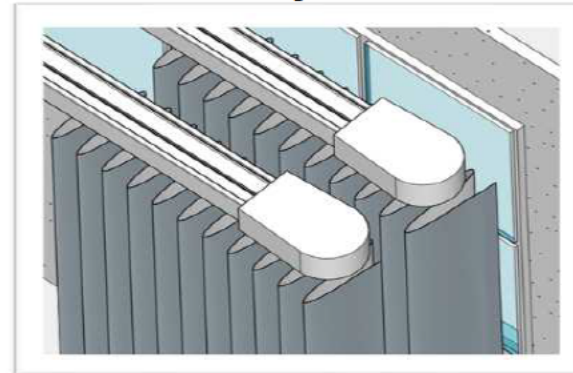
REVISIONS		
	MM/DD/YY	REMARKS
1	--/--/--	...
2	--/--/--	...
3	--/--/--	...
4	--/--/--	...
5	--/--/--	...

Depth Requirements

Single Systems



Dual Systems



Single Systems - 5" minimum depth required from the back wall or obstacle to front of fabric including clearance
 Dual Systems - minimum depth required from the back wall or obstacle to front of fabric including clearance.

Pleat Style and Fullness

Ripplefold



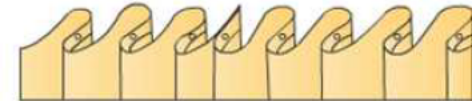
Fullness Options - 80%, 100%, 120%

Pinch Pleat



Fullness Options - 2:1, 2.5:1, 3:1

Master Carriers



Ripplefold split draw draperies use a center butt master carrier that allows the fabric to butt together, resembling the folds in the drapery.



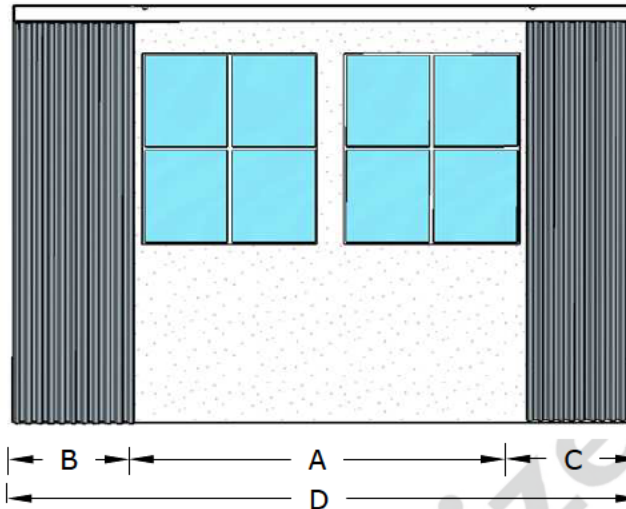
Pinch Pleat split draw draperies use an overlapping master carrier that has an increased gap coverage where the fabric meets in the center.

Drapery fullness refers to the amount of fabric used in relation to the width of the window it covers. More fullness creates a gathered or pleated look, while less fullness creates a flatter look. The ideal fullness for your drapes will depend on the style you want to achieve and the weight of the fabric.

REVISIONS		
	MM/DD/YY	REMARKS
1	--/--/--	...
2	--/--/--	...
3	--/--/--	...
4	--/--/--	...
5	--/--/--	...

Stack Back

- A. Clear glass opening
- B. Stack on left
- C. Stack on right

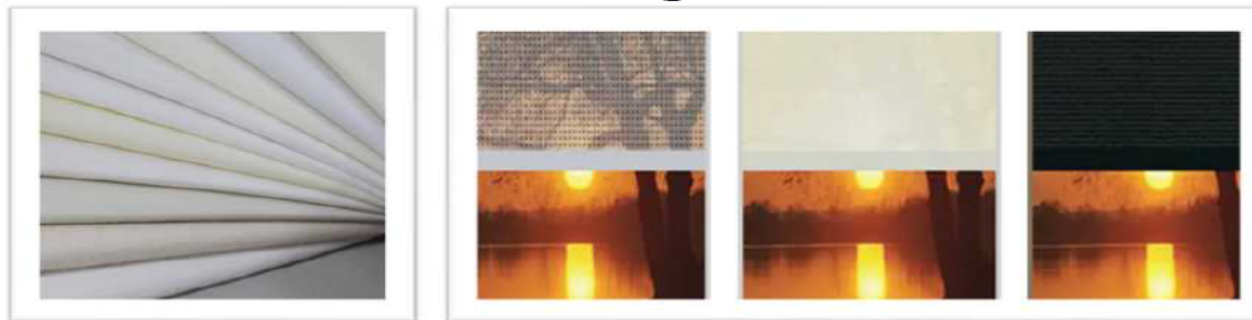


Example: If the overall track width (D) is 120", there will be approximately 20" of stack for (B) and 20" of stack for (C) giving clear glass opening (A) of 80".

Stack back refers to the amount of space the fabric occupies when fully opened. It's an essential aspect to consider when designing draperies as it impacts both functionality and aesthetics. Proper stack back ensures the curtains don't block light or obstruct views when opened, while also contributing to the overall look and style of your space. The average stack back is 30% of the overall track width (15% per side for split draw systems).

Note: Custom curved tracks are available. Contact our Design Team for details.

Lining



Lining Options:

- None
- Self
- Sheer
- Light filtering
- Room darkening

Lining your draperies offers a number of benefits. Linings can help protect your fabric from sun damage, extending their lifespan. They also add weight and body, creating a more luxurious drape and a uniform look from outside the window. Lining options range from sheer, light filtering privacy and room darkening which is ideal for bedrooms and home theaters.

Drapery Track System

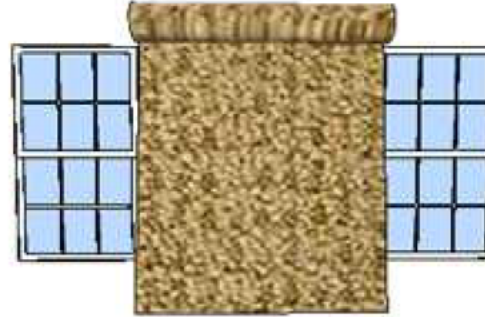


REVISIONS		
	MM/DD/YY	REMARKS
1	--/--/--	...
2	--/--/--	...
3	--/--/--	...
4	--/--/--	...
5	--/--/--	...

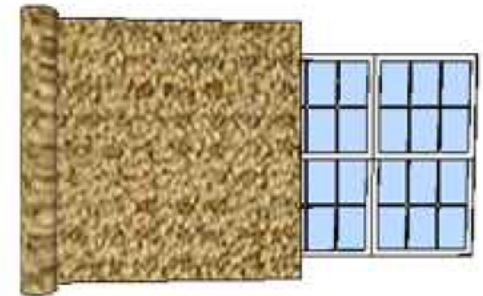
Fabrics



Shown Standard Up The Roll



Shown Railroaded



Typical drapery fabrics are 48" and 54" wide and run "Up The Roll". Seams are located vertically as required to allow for enough fabric to fully cover the opening.

Specialty fabrics are available in wide widths (typically 120"). These fabric are "Railroaded" to eliminate seams when the ceiling height is less than the fabric width.

Notes:

1. Fabric yardage requirements will vary depending on fabric width and repeat. Exact quantity cannot be determined until final fabric selections are made. We strive to providing yardages within 48 hours of being requested.
2. Please contact our Design Team for an RGA number and shipping instructions before sending materials to our facility.
3. The combined fabric and lining selections will affect the drapery look. Weight, weave and fiber content influence how the drapery will lay and perform.
 - * Fabric weight: Lighter fabrics like chiffon or voile will drape more fluidly. Heavier fabrics like velvet or brocade will drape more stiffly.
 - * Weave and Fiber content: Fabrics with an open weave will tend to stretch. Materials with linen will be more likely to show wrinkles.

REVISIONS		
	MM/DD/YY	REMARKS
1	--/--/--	...
2	--/--/--	...
3	--/--/--	...
4	--/--/--	...
5	--/--/--	...