



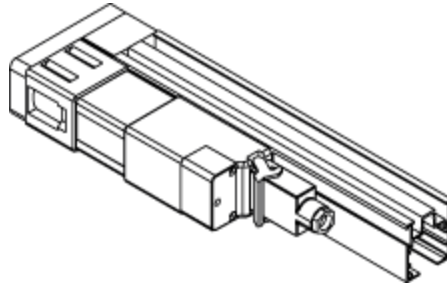
DEL MOTORIZED SOLUTIONS

(866) 44MOTOR - (215) 639.3880

WWW.MOTORIZEDSOLUTIONS.COM

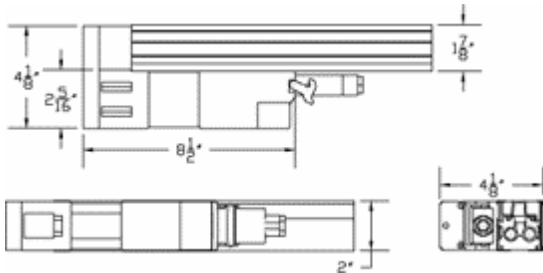
Features

- Motor is mounted behind track and completely hidden by the headrail
- One button operation for rotating and traversing
- Two tracks of equal length can be butted together for large widths
- Accepts 2", 3-1/2" or 5" vanes
- Also available as a sloped system or top and bottom tracks for inclining windows



Parameters

- Max. Width = 274"
- Max. Width (Tandem Tracks) = 548"
- Max. Weight per vane = 1-1/2 lbs.
- Motor Speed = 1 ft. per 5.5 seconds
- Total track weight capacity = 60 lbs.



Hardware

- 30 Watt synchronous 110V or 220V motor
- UL-recognized, with internal limit switches and thermal overload protectors
- Anodized aluminum extrusion
- Self-aligning spring-loaded carriers